

Forest Glen

RENEE NANNEMAN



Hopscotch Quilt designed by: **Andover Fabrics**
Quilt Size: **83" x 83"** • Skill Level: **Intermediate**

andover • makower.uk

Free Pattern Download Available

1384 Broadway New York, NY 10018
Tel. (800) 223-5678 • andoverfabrics.com

Hopscotch



Featuring Andover Fabrics new collection: Forest Glen by Renee Nanneman

Quilt designed by Andover Fabrics

Quilt finished 83" x 83"

Quilt Cutting Directions

Note: Read assembly directions before cutting patches. Borders are cut to exact length required plus $\frac{1}{4}$ " seam allowance. WOF designates the width of fabric from selvedge to selvedge (approximately 42" wide). 5" square packs contain (42) squares of assorted fabrics.

Fabric A Pull (4) Fabric G squares from packs of 5" squares.
Select (44) assorted Red/Pink squares for Outer Border.
Select (136) squares for Blocks.

Fabric B Cut (3) $7\frac{5}{8}$ " x WOF strips. Sub-cut the strips into (12) $7\frac{5}{8}$ " squares. Cut the $7\frac{5}{8}$ " squares across both diagonals to make (48) $7\frac{5}{8}$ " triangles.
Cut (2) 5" x WOF strips. Sub-cut the strips into (12) 5" squares and (2) 4" squares. Cut the 4" squares across (1) diagonal to make (4) 4" triangles.

Fabric C Cut (1) 5" x WOF strip. Sub-cut the strip into (8) 5" squares.

Fabric D Cut (1) 5" x WOF strip. Sub-cut the strip into (8) 5" squares.
Cut (11) 2" x WOF strips.

Fabric E Cut (12) 2" x WOF strips.

Fabric F Cut (28) 2" x WOF strips.

Fabric G Use the (4) 5" squares pulled from Fabric A.

Binding Cut (9) $2\frac{1}{2}$ " x WOF strips.

Backing Cut (3) 91" x WOF strips. Sew the strips together and trim to make (1) 91" x 91" backing.

Fabric Requirements

Quilt		Yardage	Fabric
Fabric A	blocks, border	(6) 5" squares packs	15-FORGLEN-X
Fabric B	blocks, setting triangles	1 yard + part of Fabric A	10052-V
Fabric C	blocks	$\frac{3}{8}$ yard	10053-E
Fabric D	blocks	1 yard	10054-P
Fabric E	blocks	1 yard	10061-P
Fabric F	blocks	1 $\frac{3}{4}$ yards	10061-L
Fabric G	blocks	part of Fabric A	10052-G
Binding		$\frac{3}{4}$ yard	10061-G
Backing		7 $\frac{3}{4}$ yards	Your Choice

Making the Quilt

Note: Pay attention to the unit orientations when assembling the various components.

1. Block Assembly

Sew (1) 2" x WOF Fabric F strip to each side of (1) 2" x WOF Fabric D strip lengthwise to make (1) Strip Set 1 (Diagram 1). Repeat to make (4) additional Strip Set 1's.

2. Cut the (5) Strip Set 1's into (90) 2" x 5" Unit 1 strips (Diagram 2).

Strip Set 1
make 5



Diagram 1

Unit 1
cut 90

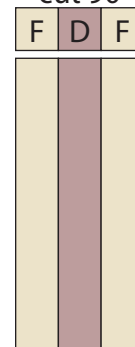


Diagram 2

Hopscotch

3. Repeat Steps 1-2 and refer to Diagrams 3-8 for fabric identification and placement to make (45) Unit 2 strips, (112) Unit 3 strips and (56) Unit 4 strips.

Strip Set 2
make 3

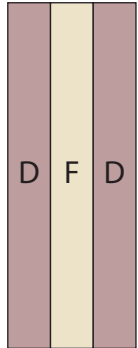


Diagram 3

Unit 2
cut 45

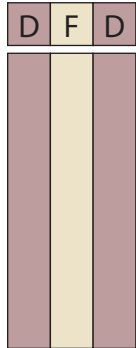


Diagram 4

Strip Set 3
make 6



Diagram 5

Unit 3
cut 112

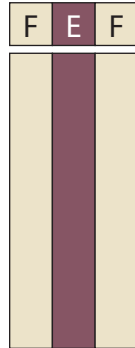


Diagram 6

Strip Set 4
make 3



Diagram 7

Unit 4
cut 56

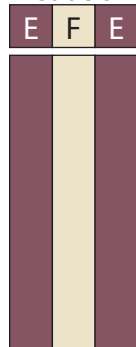


Diagram 8

4. Sew (1) Unit 1 strip to the top and bottom of (1) Unit 2 strip lengthwise to make (1) 5" Block One square (Diagram 9). Repeat to make (44) additional Block One squares.

Block One
make 45

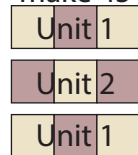


Diagram 9

5. Sew (1) Unit 3 strip to the top and bottom of (1) Unit 4 strip lengthwise to make (1) 5" Block Two square (Diagram 10). Repeat to make (55) additional Block Two squares.

Block Two
make 56

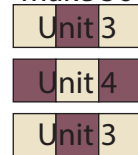


Diagram 10

Quilt Top Assembly

(Refer to Diagram 11 on Page 4 and the Quilt Layout on Page 5 when assembling the quilt top.)

6. Sew (1) 7 5/8" Fabric B triangle to each side of (1) Block Two square. Sew (1) 4" Fabric B triangle to the top of the Block Two square to make Row One (Diagram 11).
7. Sew together (1) 7 5/8" Fabric B triangle, (1) Block Two square, (1) 5" red/pink Fabric A square, (1) Block Two square and (1) 7 5/8" Fabric B triangle, in that order from left to right, to make Row Two.
8. Repeat Step 7 and refer to Diagram 11 for component identification, placement and orientation to make Row Three through Row Twelve and Row Fourteen through Row Twenty-four.
9. Sew together (1) 4" Fabric B triangle, (1) Block Two square, (1) 5" red/pink Fabric A square, (7) assorted 5" Fabric A squares, (1) 5" Fabric C square, (1) 5" Fabric G square, (1) Block One square, (1) 5" Fabric G square, (1) 5" Fabric C square, (7) assorted 5" Fabric A squares, (1) Block One square, (1) 5" red/pink Fabric A square, (1) Block Two square and (1) 4" Fabric B triangle, in that order from left to right, to make Row Thirteen (Diagram 11).
10. Sew (1) 7 5/8" Fabric B triangle to each side of (1) Block Two square. Sew (1) 4" Fabric B triangle to the bottom of the Block Two square to make Row Twenty-Five (Diagram 11).
11. Sew together the (25) rows, lengthwise and in numerical order from top to bottom to make the Quilt Top.

Hopscotch

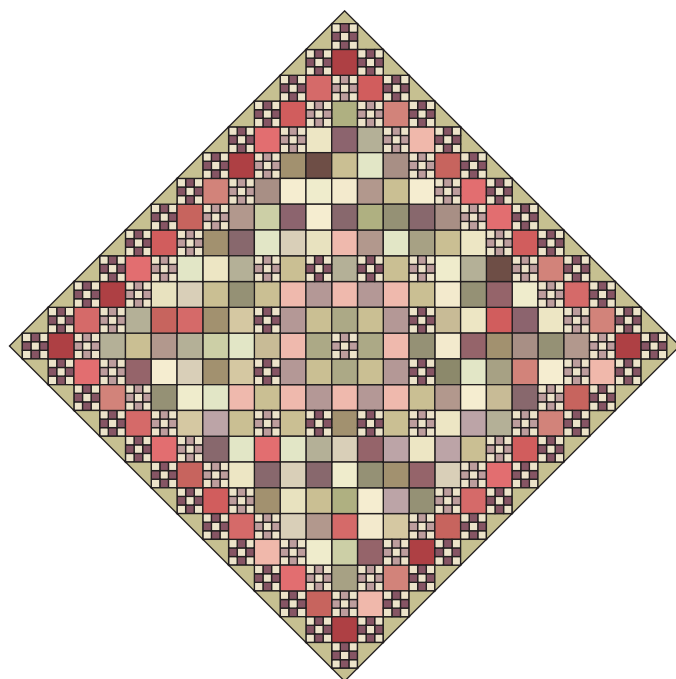


Diagram 11

Hopscotch

Finishing the Quilt

12. Layer and quilt as desired.
13. Sew the (9) binding strips together, end to end with 45-degree seams, to make the binding. Fold this long strip in half lengthwise with wrong sides together and press.
14. Bind as desired.



Quilt Layout



Quilt Top

Forest Glen

ANDOVER FABRICS



Note: You will need (6) Forest Glen 5" squares packs and 7 ¾ yards (backing) in addition to the yardages listed below.



10052-G

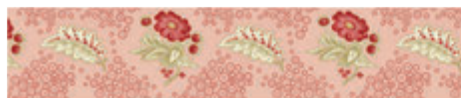


10052-L



10052-V

1 yd



10053-E

¾ yd



10053-L



10053-R



10054-N



10054-P

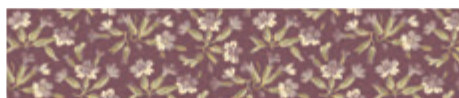
1 yd



10054-R



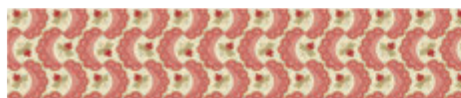
10055-LE



10055-P



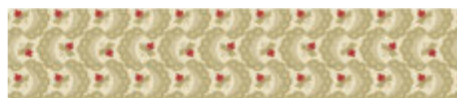
10055-VE



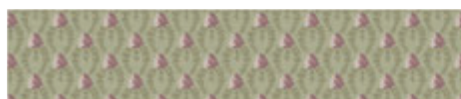
10056-E



10056-P



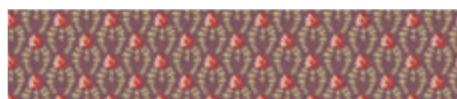
10056-V



10057-G



10057-L



10057-P



10058-E



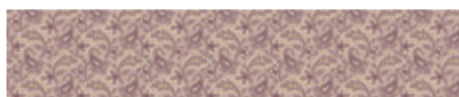
10058-G



10058-V



10059-N



10059-P



10059-R



10060-E



10060-G



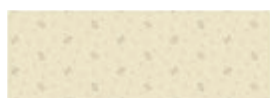
10060-V



10061-G

(binding)

¾ yd



10061-L

1 ¾ yds



10061-P

1 yd



10061-R



10061-V



10065-L



10066-N



10066-R

Bolts needed to cut project kits: 15 yds = 1 bolt

andover : makower uk

Free Pattern Download Available

1384 Broadway New York, NY 10018
Tel. (800) 223-5678 • andoverfabrics.com